

CALUWÉ ARTISAN

BELGIAN CHOCOLATIER - EST 1968

Bulk chocolates

Regalo

PR0001



Milk chocolate filled with raspberry flavoured fondant cream.

Coeur d'amour

PR0003



Dark chocolate filled with orange flavoured fondant cream.

Lacta

PR0011



Light coffee mousse filling enrobed with milk chocolate.

Tourelle

PR0073



A dark chocolate caramel ganache.

Charlotte

PR0101



Milk chocolate filled with soft caramel.

Amandine

PR0103



Light hazelnut-caramel flavoured filling enrobed with milk chocolate.

Amalia

PR0104



Light coffee-caramel flavoured filling and nuts enrobed with dark chocolate.

Cadeau

PR0119



Dark chocolate filled with vanilla flavoured fondant cream and cashew nut pieces.

Croc à lait

PR0121



Milk chocolate croquant.

Croc à noir

PR0122



Dark chocolate croquant.

Croc à blanc

PR0123



White chocolate croquant.

Opera

PR0125



Dark chocolate filled with orange flavoured liqueur ganache.

New

Lemon mousse PR0239



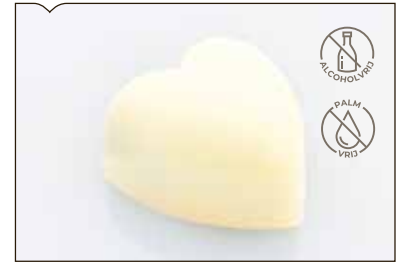
Dark chocolate filled with lemon mousse filling.

Octavia PR0250



Milk chocolate filled with a butter caramel.

Sweetheart PR0267



White chocolate with salted caramel.

Tentation PR0297



Dark chocolate filled with praliné and hazelnut flavour.

Amour PR0689



New

Milk, butter caramel

Julie PR3501



Milk chocolate filled with soft salted caramel.



Tosca PR0082



Light crème brûlée flavoured filling enrobed with milk chocolate.

Confiseur PR0105



Milk chocolate with hazelnut-almond praliné.

Mignon PR0109



Light coffee-caramel filling on a croquant base enrobed with white chocolate.

Musica PR0117



Milk chocolate filled with hazelnut praliné and caramelized hazelnut pieces.

Angel PR0130



Morello cherry drenched in cherry liqueur in a dark chocolate shell.

Cardinal PR0220



Milk chocolate with a vanilla filling.

Oreon PR0221



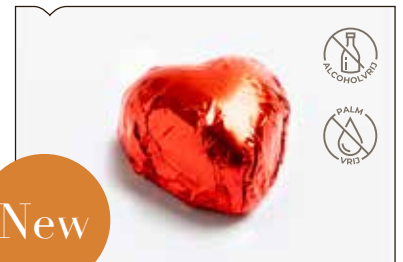
Dark chocolate filled with an orange truffle topped with an orange jam layer.

Veritate PR0242



White chocolate filled with a chocolate rum-mocha flavoured mousse.

Love PR0244



Praliné with chopped nuts.

New

Lemona PR0245



Light lemon filling enrobed with milk chocolate and decorated with a piece of lemon.

Rum dressé PR0246



Rum dressé with a raisin enrobed with milk chocolate.

Marzipan PR0247



Marzipan enrobed with milk chocolate.

New

Marzipan hazelnut PR0253



Marzipan in dark chocolate decorated with hazelnut pieces.

Astrid PR0261



New

Dark chocolate filled with an espresso ganache.

Marzipan white PR0263



New

Marzipan enrobed in white chocolate.

Cereza PR0266



White chocolate filled with a cherry ganache.

Valencia PR0326



Milk chocolate filled with almond praliné.

Elvira PR0328



White chocolate filled with hazelnut praliné

Chocolate brownie PR0345



Dark chocolate brownie cup.

Mignon Vanille PR0396



New

Light vanilla filling on a croquant base enrobed with milk chocolate.

Swirl PR1210



White, hazelnut and almond praliné

Ristretto PR6019



Coffee flavoured chocolate mousse enrobed in dark chocolate.

Alberic PR6201



Milk chocolate cup filled with a rich, soft caramel. Sprinkled with caramel pieces.

Signature PR7001



Light flan caramel filling on a croquant base enrobed with milk chocolate.

Passion

PR7090



Milk chocolate filled with passion fruit ganache.



Zebra

PR0027



Triple chocolate mocha-hazelnut flavored praliné enrobed with white chocolate.

Gianduja Lait

PR0111



Milk gianduja.

Manon blanc

PR0134



Light coffee flavoured filling on a croquant base enrobed with white chocolate.

Manon lait

PR0135



Light hazelnut flavoured filling on a croquant base enrobed with milk chocolate.

Manon noir

PR0137



Light coffee flavoured filling on a croquant base enrobed with dark chocolate.

Salted caramel

PR0145



A rich caramel made with Beurre d'Isigny complemented with a hint of fleur de sel de Guérande.

Himalaya

PR0184



Milk chocolate filled with honey caramel with himalayan salt.

Albico

PR0256



Light apricot filling on a chocolate base enrobed with dark chocolate.

Niki

PR0348



Milk, espresso ganache filling

Maxima

PR0371



Milk gianduja with caramel pieces.

Louise

PR0395



White raspberry ganache with pink sprinkle.

Gianduja dome

PR0688



Gianduja in a milk chocolate shell.

New

Lungo

PR1109



Milk chocolate with a light coffee filling and decorated with chocolate pieces.

Casanova

PR2283



Raspberry caramel ganache enrobed with dark chocolate.

Tiara

PR4110



Milk chocolate cup filled with hazelnut-almond praliné.

Plaisir Noir

PR5008



Dark chocolate cup filled with dark ganache and decorated with cocoa nibs.



Marzipan raspberry PR0019



A raspberry marzipan enrobed with dark chocolate and decorated with raspberry pieces.

Cezanne PR0066



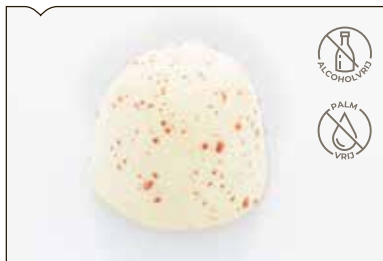
Milk chocolate cup filled with salted almond praliné.

Pistacchio PR0070



A pistachio praliné with pistachio flavoured truffle in a milk chocolate shell.

Hazelnut PR0146



An indulgent praliné made with pure hazelnut paste in white chocolate.

Cherry PR0147



A sour cherry ganache made with morello cherry pulp and dark chocolate.

Eminence PR0189



White chocolate filled with a vanilla truffle.

Orangettes PR0305



Candied orange pieces enrobed in dark chocolate.

Luigi PR0442



White, strawberry yoghurt filling decorated with blackberry sugar pieces

Buchette PR2111



White chocolate filled with a hazelnut praliné and decorated with chopped hazelnuts.

Supreme PR5087



Dark chocolate cup filled with chocolate mousse and café latte.